



Snowy Monaro

April 2024

SNOWY MONARO

Snowy Monaro LGA



With the three main population centres all on major highways, easy access to Canberra as well as Sydney, Melbourne and the coast, good services and amenities, Snowy Monaro offers unlimited potential for the astute investor.

Couple this with vibrant, cohesive communities, a stable workforce, strong economic drivers and a post card perfect natural environment, Snowy Monaro really is the place to live, work and invest.

Only in the Snowy Monaro can you ski the highest mountain in Australia, take a specular drive through majestic forests to the coast to see the whales, come back

up the mountain to see the platypus at Bombala and then continue on through undulating farmland to watch the moon rise over Lake Jindabyne.

Rich agricultural land, job opportunities and inexpensive housing and land packages add to the many benefits of living the dream within the inspiring Snowy Monaro region.



SNOWY MONARO REGIONAL SNAPSHOT



POPULATION
21,823
0.3% of NSW

TOP 4
GRP BY INDUSTRY



GRP
\$2,322m
0.3% of NSW

ACCOMMODATION & FOOD SERVICES

\$234.5m



NUMBER OF LOCAL BUSINESSES
2,895
0.3% of NSW

ELECTRICITY, GAS, WATER & WASTE SERVICES

\$212.3m

CONSTRUCTION

\$207.0m



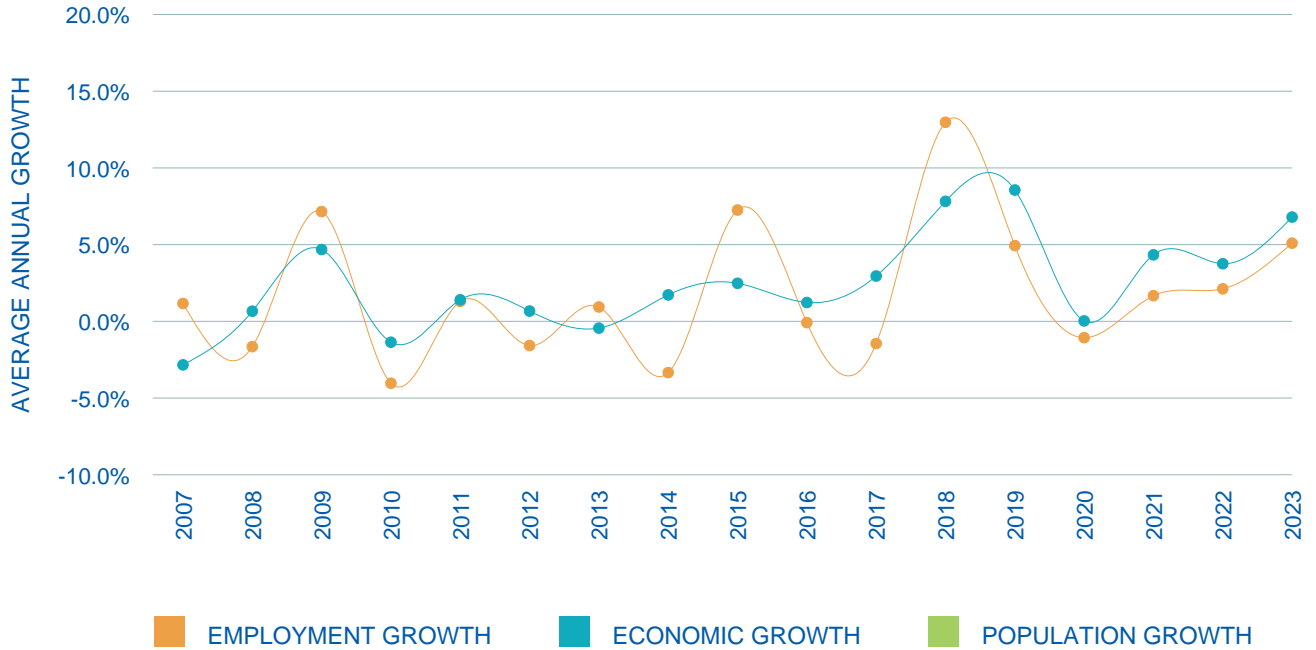
AVERAGE AGE
41.8 Yrs
39.4 in NSW

OWNERSHIP OF DWELLINGS

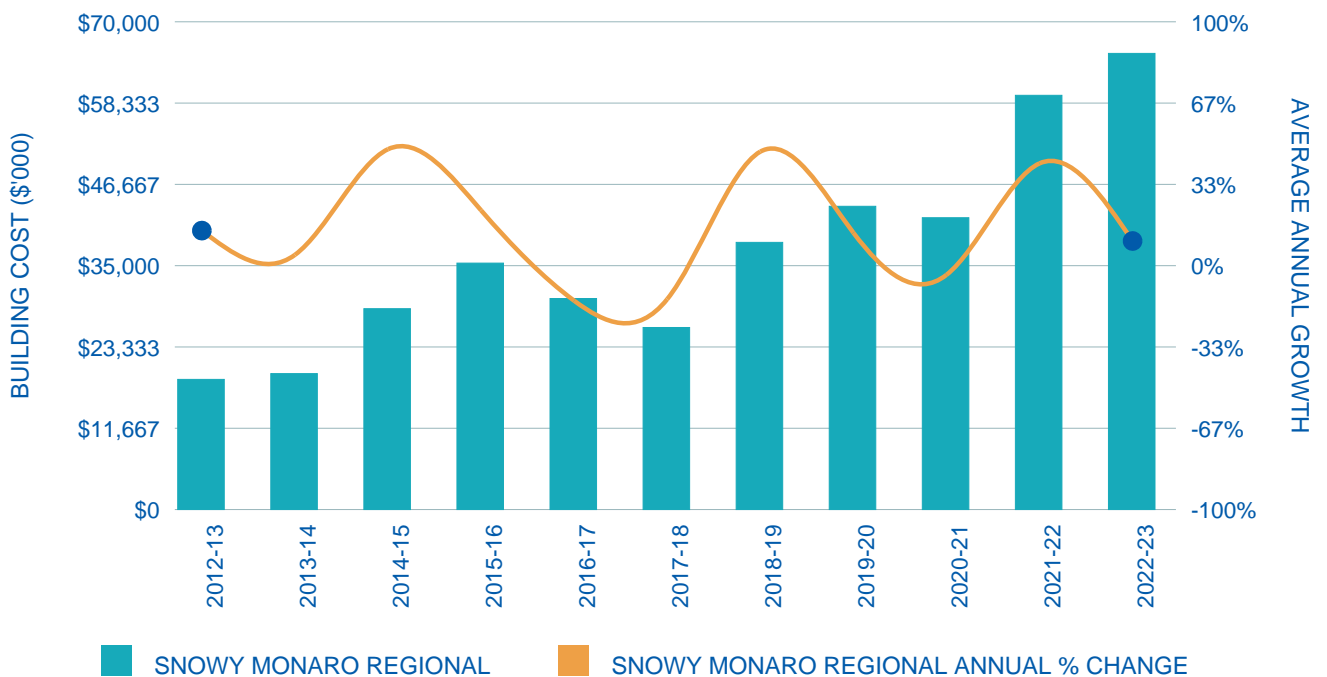
\$201.6m



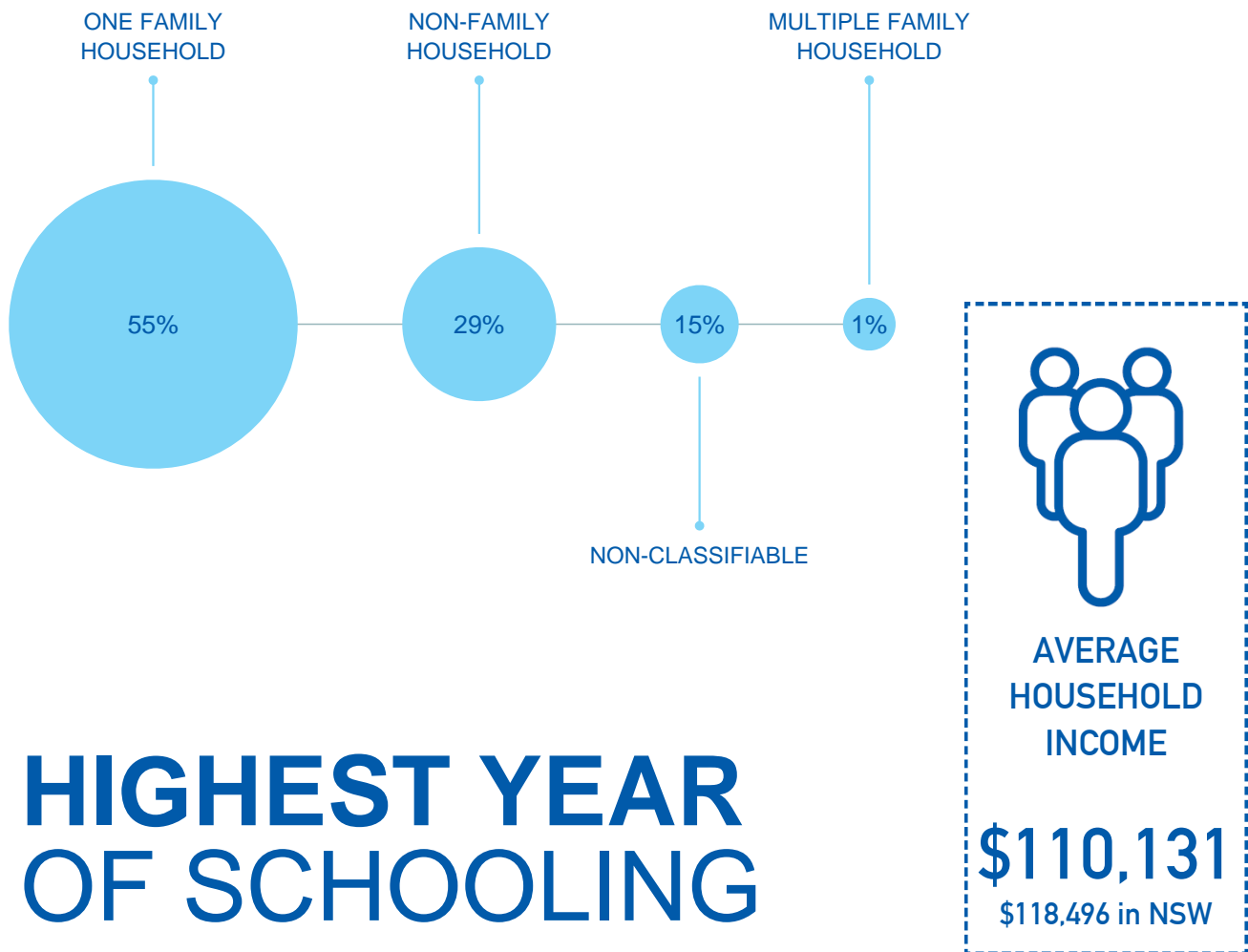
GROWTH DATA SUMMARY



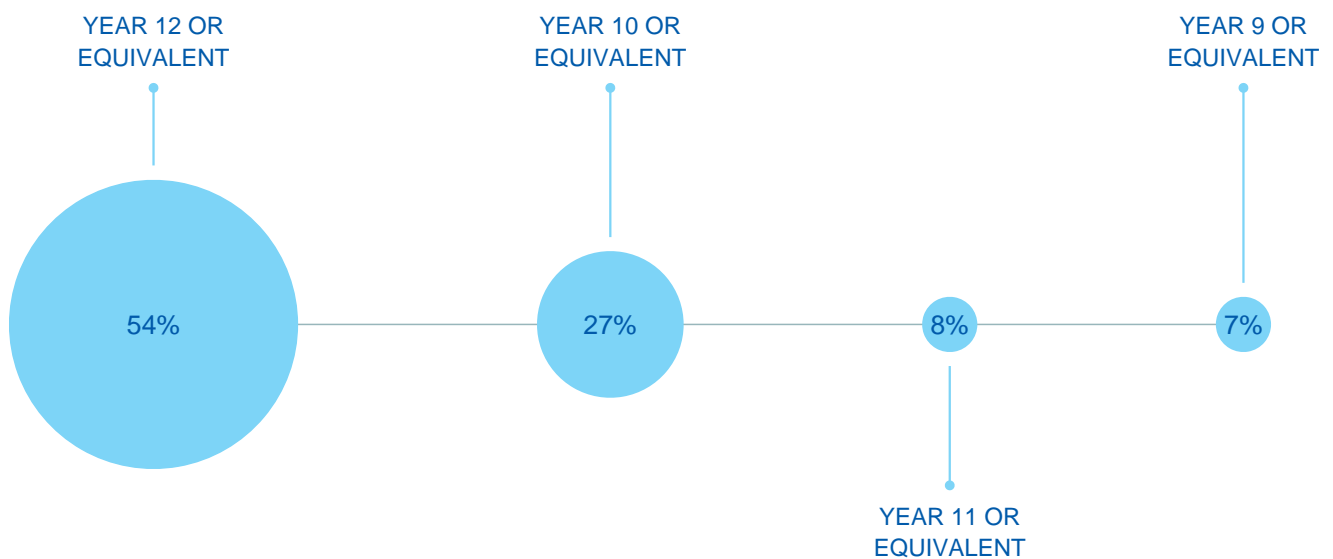
RESIDENTIAL BUILDING APPROVALS



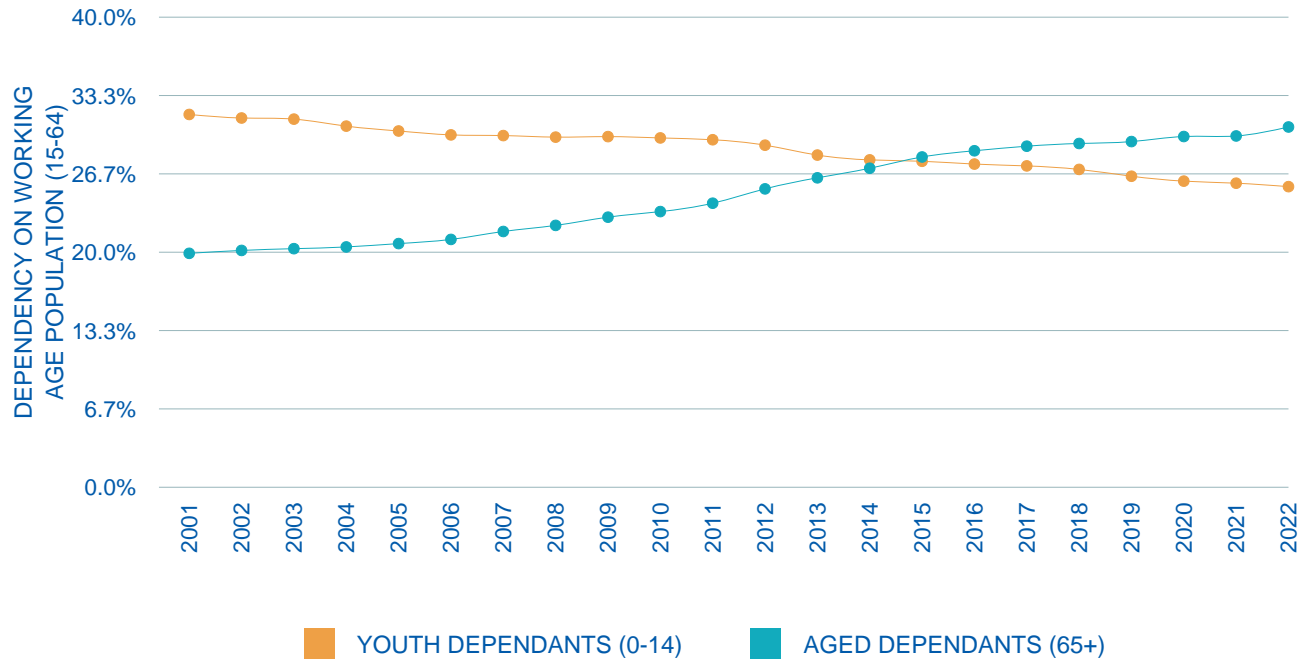
HOUSEHOLD COMPOSITION



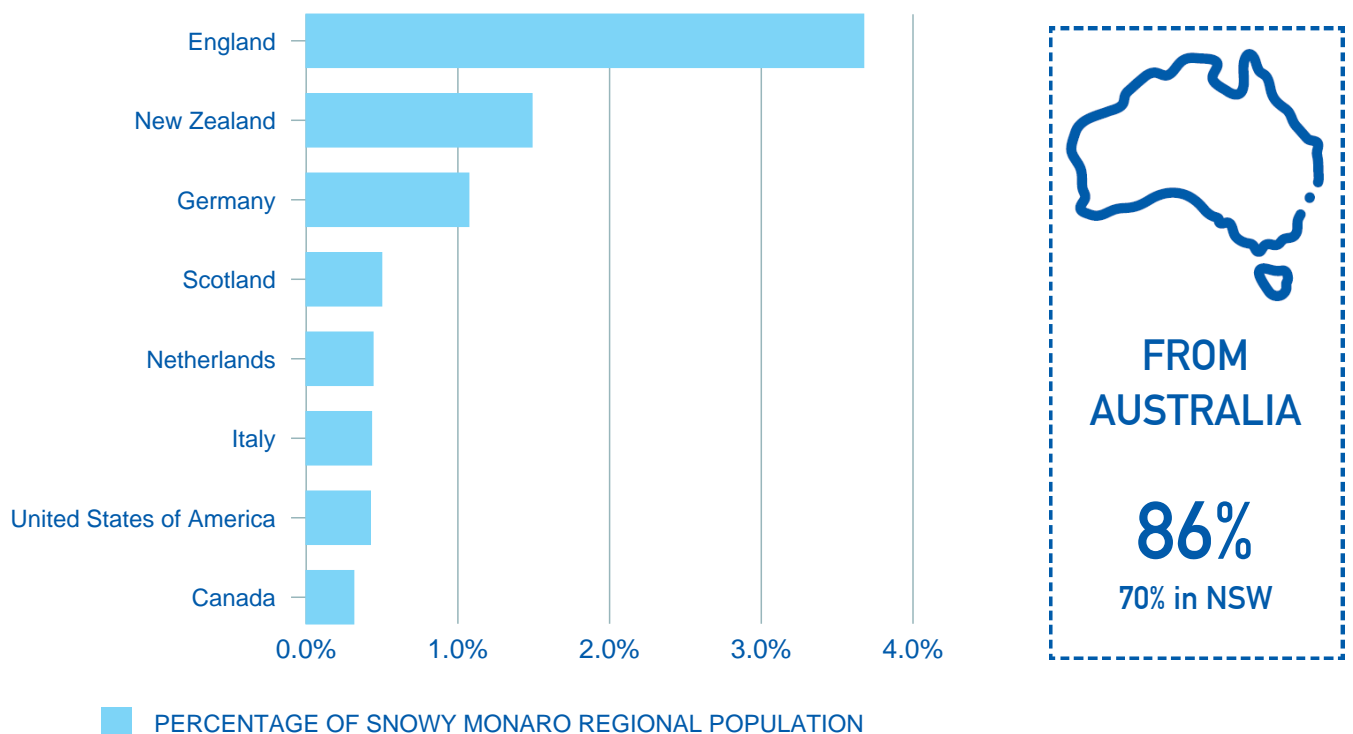
HIGHEST YEAR OF SCHOOLING



DEPENDENCY RATIOS



CULTURAL BACKGROUND



TOURISM SUMMARY

YEAR ENDING
2019-20



TOTAL VISITORS
1,020
(000's)



INTERSTATE
15.8%



INTERNATIONAL
1.3%

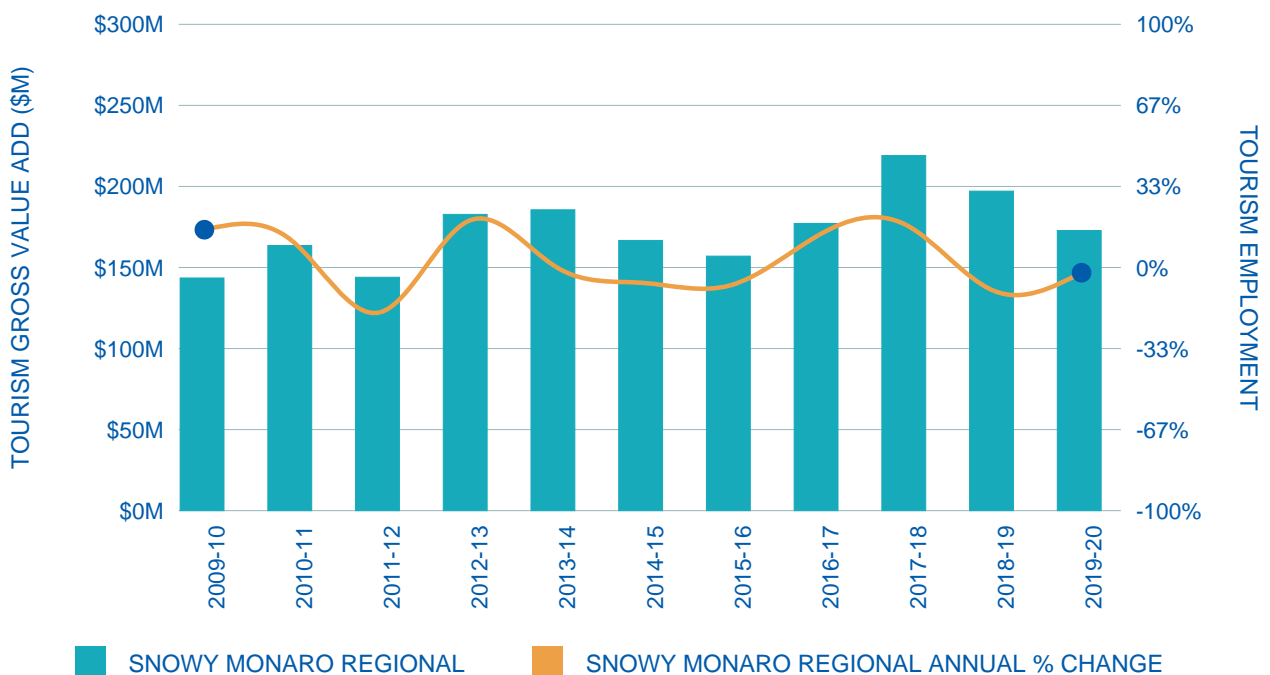


INTRASTATE
44.6%

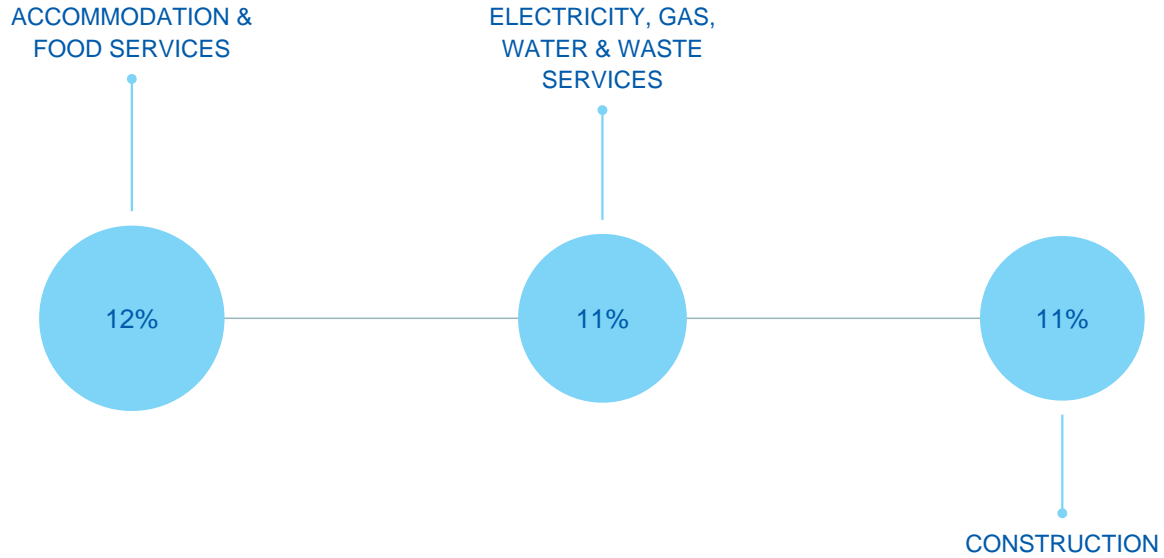


DAYTRIPS
38.3%

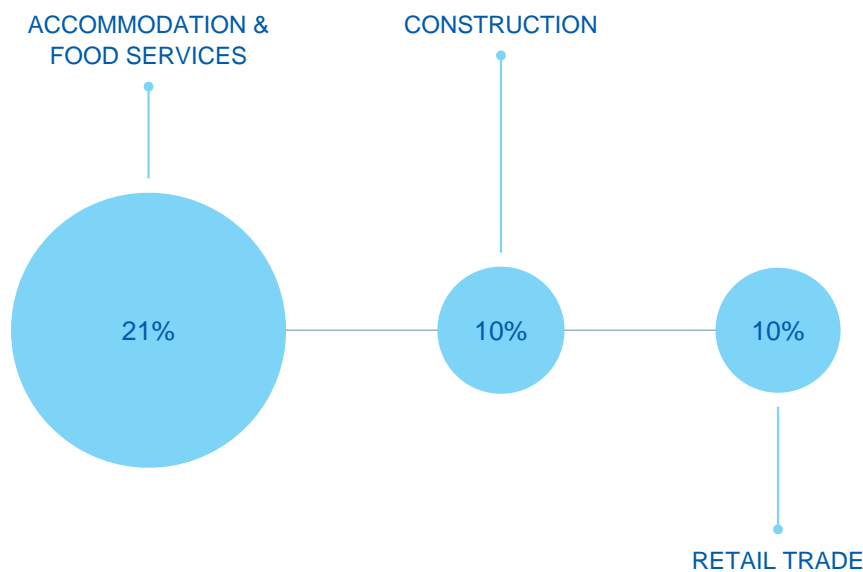
VALUE OF TOURISM



INDUSTRY VALUE ADD BY TOP 3 SECTORS



EMPLOYMENT BY INDUSTRY



NUMBER OF LOCAL JOBS

12,793



Regional Development Australia Southern
NSW and ACT
T: 02 4822 6397
E: admin@rdasna.org.au
W: www.rdasna.org.au

Image credit: Destination NSW

Powered by



Disclaimer: Whilst all care and diligence have been exercised in the preparation of this data, AEC Group Pty Ltd (or its associated parties) do not warrant the accuracy of the information contained within and accept no liability for any loss of damage that may be suffered as a result of reliance on this information, whether or not there has been any error, omission or negligence in the development and presentation of information contained in DataAU by the employees, associated parties or information providers of AEC Group Pty Ltd. It is the nature of this data that it may quickly become out of date, and users must make their own assessment of the relevance and accuracy of the data for their intended purpose. No representation is provided regarding the timeliness or accuracy of updated materials.