



Goulburn Mulwaree

April 2024



GOULBURN MULWAREE E

Just two hours from Sydney and one hour from Canberra, Goulburn gives businesses great access to markets, resources and ports but with much lower overheads.

Combined with a strong and ready labour pool, you can see why many business have chosen Goulburn for their next location. Location, with country and rural lifestyle benefits, as well as excellent services and amenities, makes the Goulburn area a fantastic place to live and work.

Goulburn-Mulwaree
LGA



Where the city was historically a regional centre dependent on a large railway workshop, big wool stores and textile mills, Goulburn now looks to a future in the new economy.

Being so close to Sydney and Canberra - yet proudly independent of these major centres - Goulburn is ideally situated for businesses and individuals from diverse fields such as IT, communications, retail, distribution and logistics, engineering, mines, renewable energy and construction.



GOULBURN MULWAREE SNAPSHOT



POPULATION
32,428
0.4% of NSW

TOP 4

GRP BY INDUSTRY



GRP
\$2,389m
0.3% of NSW

HEALTH CARE & SOCIAL ASSISTANCE

\$245.3m



NUMBER OF
LOCAL BUSINESSES
2,623
0.3% of NSW

OWNERSHIP OF DWELLINGS

\$216.0m



AVERAGE AGE
41.2 Yrs
39.4 in NSW

CONSTRUCTION

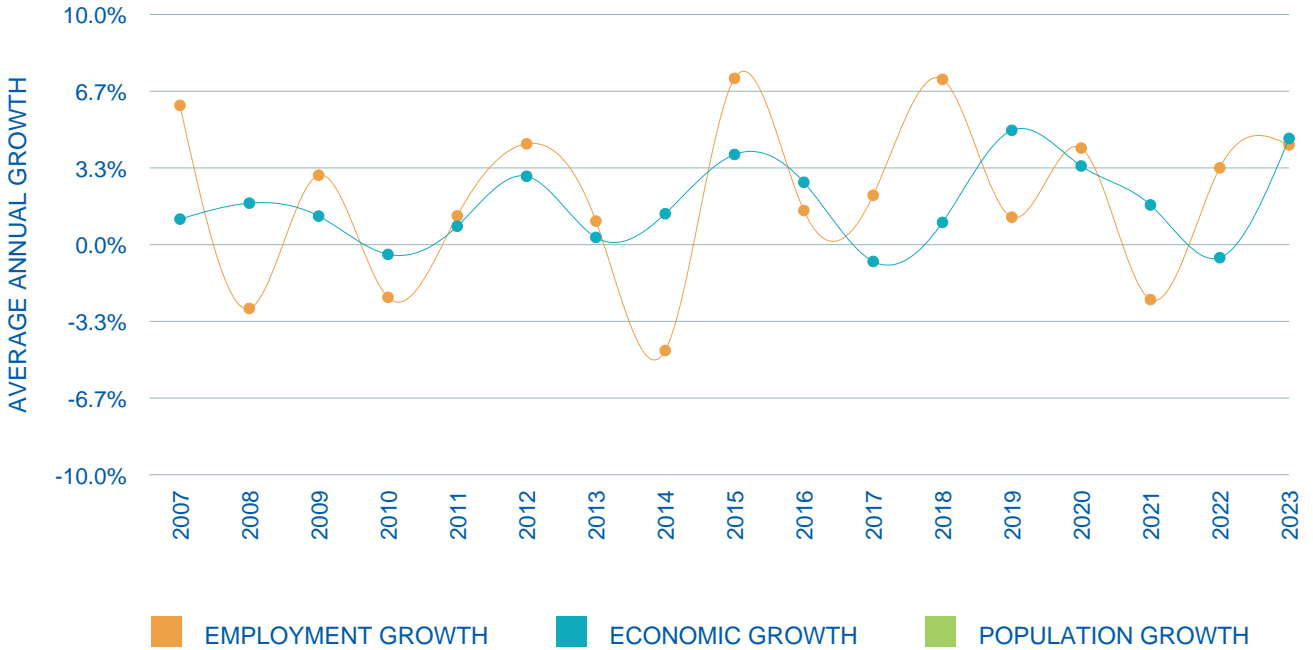
\$205.8m

MANUFACTURING

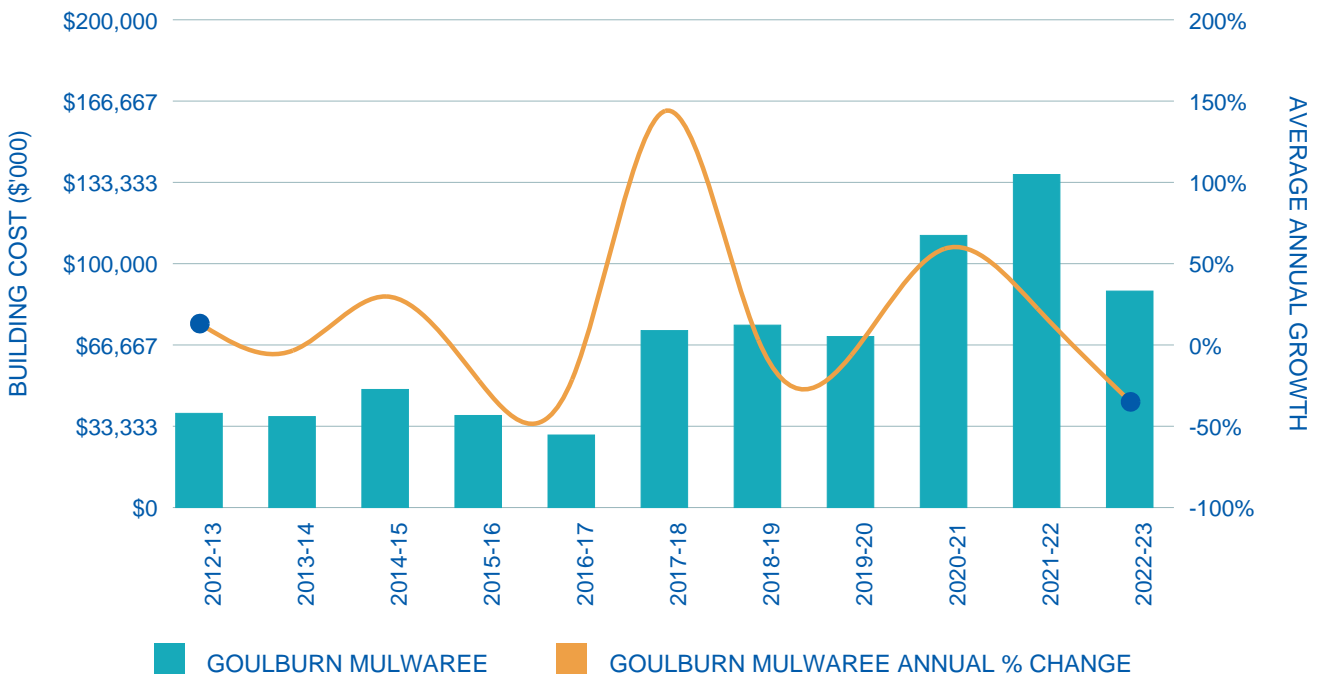
\$186.0m



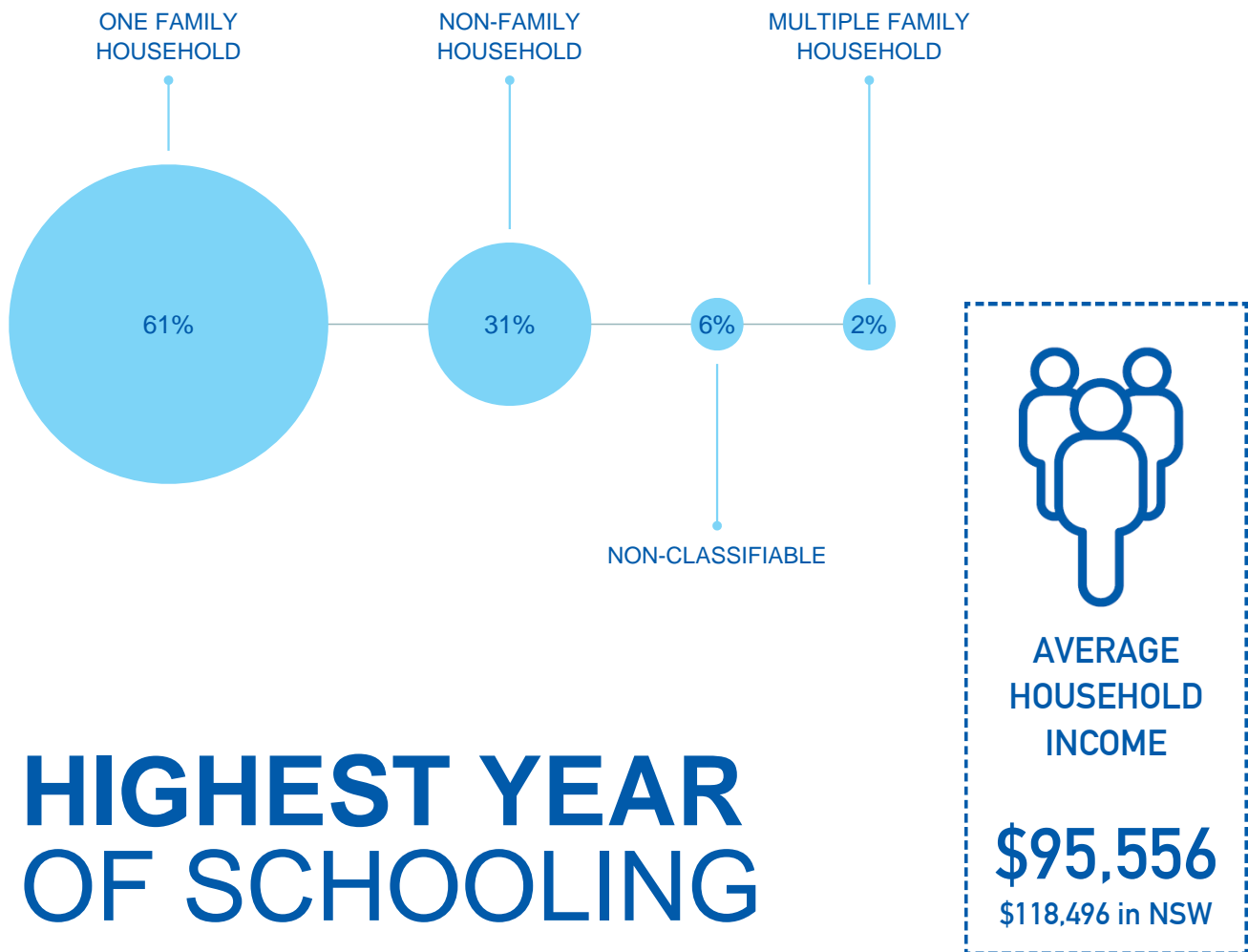
GROWTH DATA SUMMARY



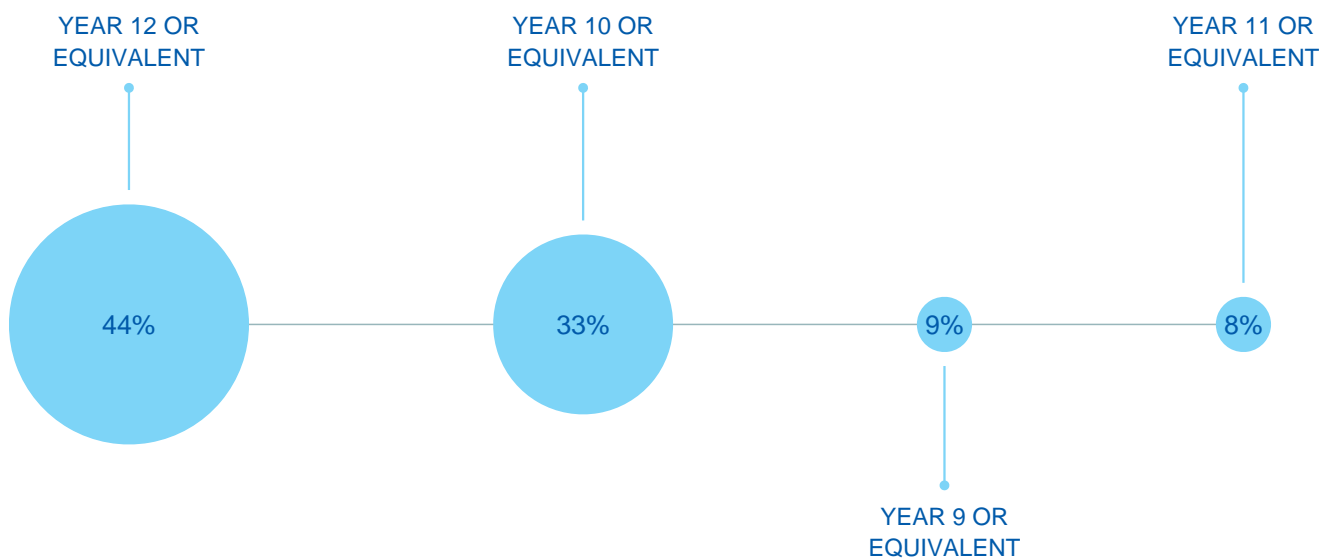
RESIDENTIAL BUILDING APPROVALS



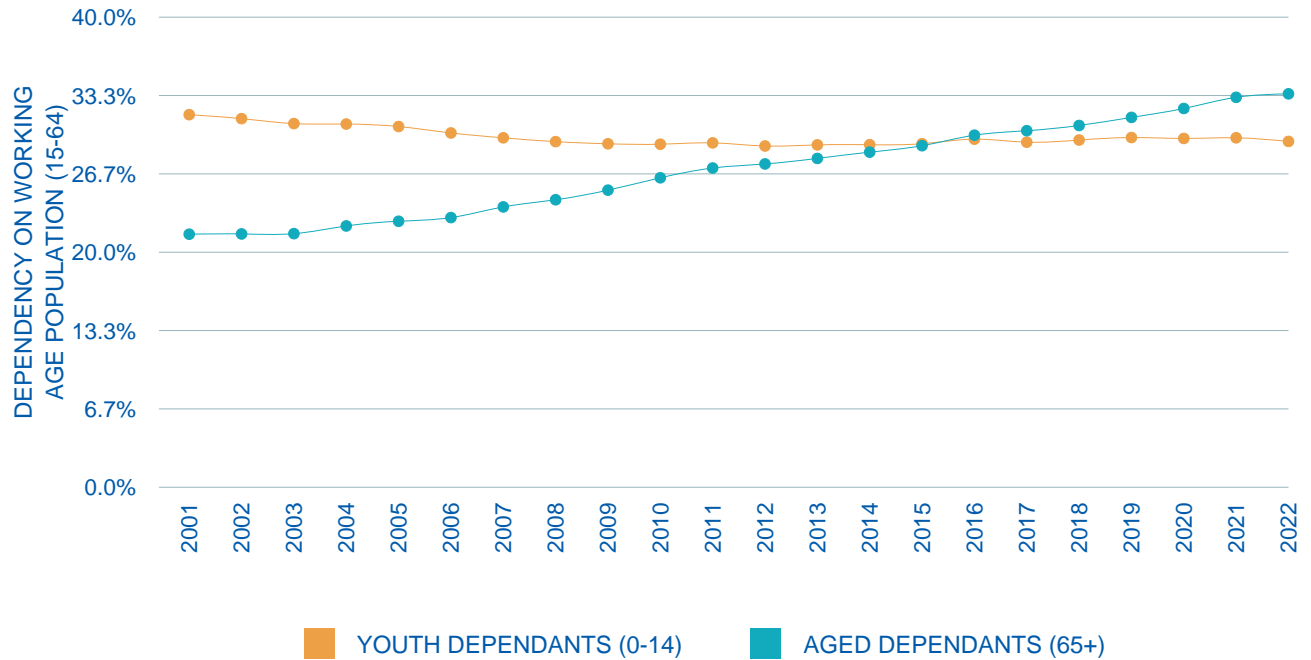
HOUSEHOLD COMPOSITION



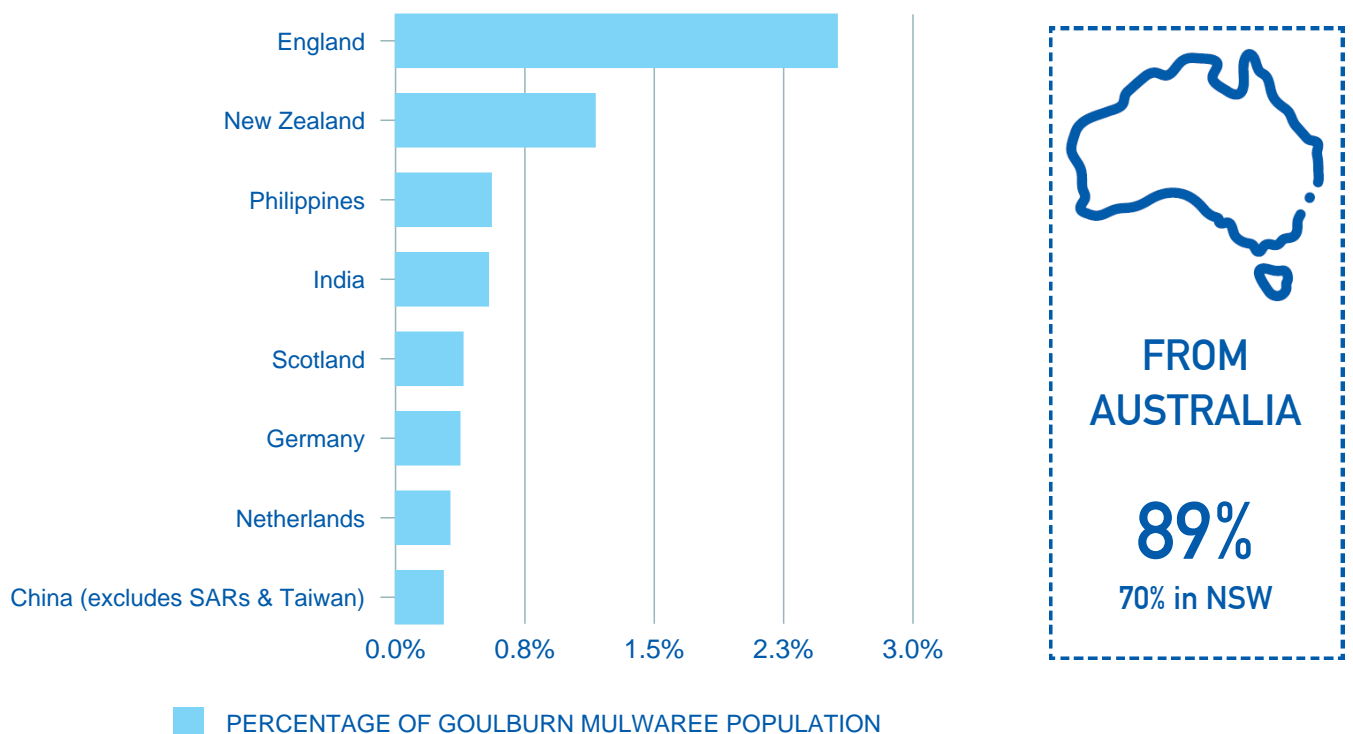
HIGHEST YEAR OF SCHOOLING



DEPENDENCY RATIOS



CULTURAL BACKGROUND



TOURISM SUMMARY

YEAR ENDING
2019-20



TOTAL VISITORS
1,078
(000's)



INTERSTATE
8.6%



INTERNATIONAL
0.5%

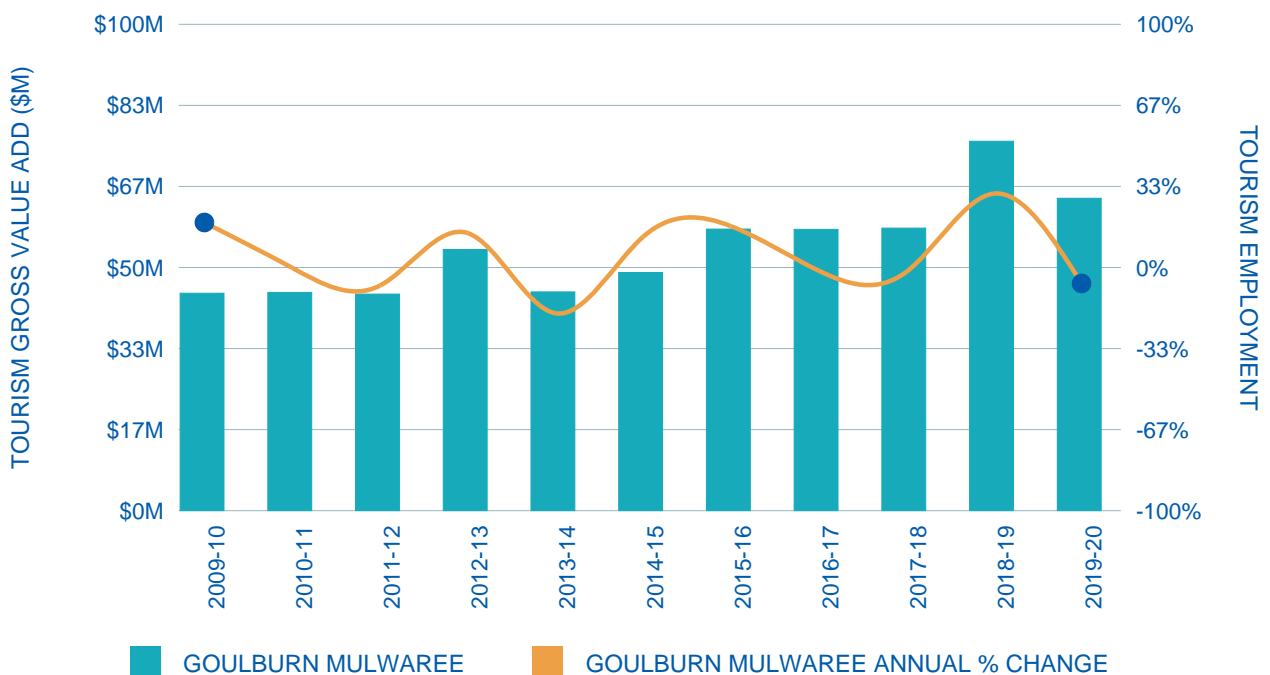


INTRASTATE
24.1%

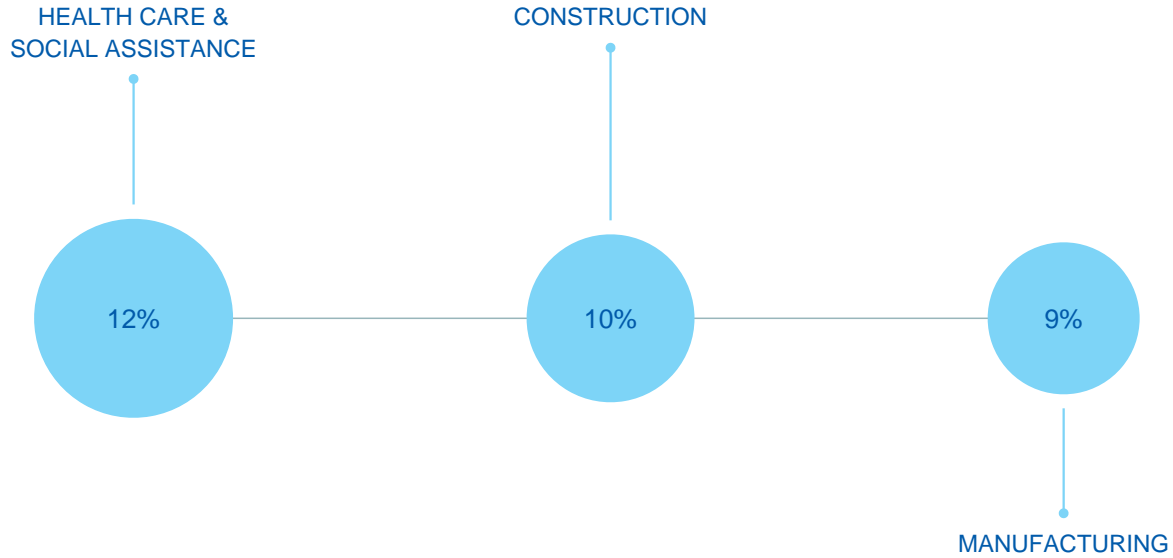


DAYTRIPS
66.8%

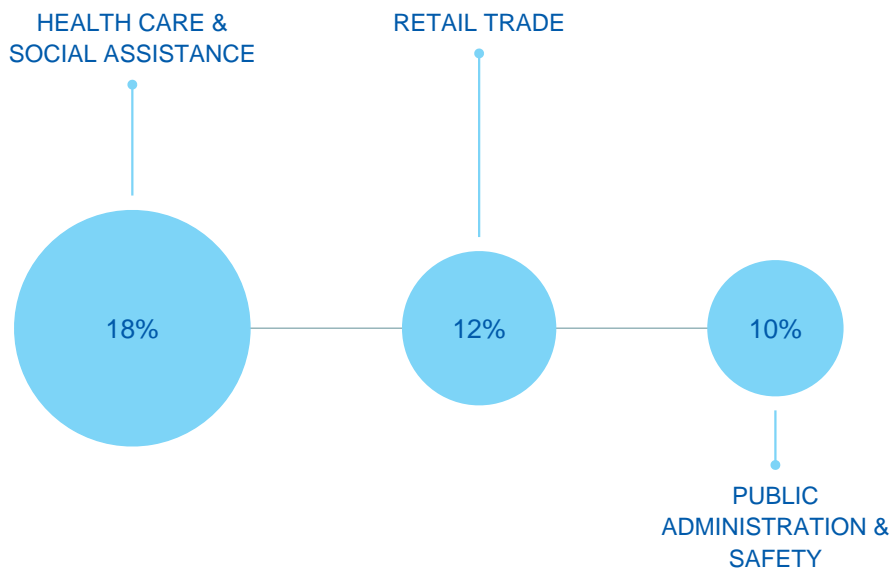
VALUE OF TOURISM



INDUSTRY VALUE ADD BY TOP 3 SECTORS



EMPLOYMENT BY INDUSTRY



NUMBER OF LOCAL JOBS
14,629



Regional Development Australia Southern
NSW and ACT
T: 02 4822 6397
E: admin@rdasna.org.au
W: www.rdasna.org.au

Image credit: Destination NSW



Powered by

DataAU

Disclaimer: Whilst all care and diligence have been exercised in the preparation of this data, AEC Group Pty Ltd (or its associated parties) do not warrant the accuracy of the information contained within and accept no liability for any loss of damage that may be suffered as a result of reliance on this information, whether or not there has been any error, omission or negligence in the development and presentation of information contained in DataAU by the employees, associated parties or information providers of AEC Group Pty Ltd. It is the nature of this data that it may quickly become out of date, and users must make their own assessment of the relevance and accuracy of the data for their intended purpose. No representation is provided regarding the timeliness or accuracy of updated materials.